

Using XFEM technique to predict the damage of unidirectional CFRP composite notched under tensile load

H. BENZAAMA^a, M. MOKHTARI^b, G. SADEK^c

a. Laboratoire de Biomécanique Appliquée et Biomatériaux, Ecole Nationale Polytechnique d'Oran M.A., ENP Oran M.A. Algeria. habenza@yahoo.fr

b. Laboratoire de Recherche en Technologie de Fabrication Mécanique, Ecole Nationale Polytechnique of Oran, ENP Oran M.A. Algeria. mokhtarimohamed44@yahoo.fr

c. Laboratoire Mécanique Physique des Matériaux (LMPM), Ecole Nationale Polytechnique d'Oran M.A., ENP Oran M.A. Algeria gouasmi_sadek@yahoo.fr

Abstract :

The composite materials are widely used in aircraft structures. Their relative rigidity/weight gives them an important advantage over the metal structures. The objective of this work is to analyze by the finite element method the mechanical behavior of composite plate type notched with various forms under tensile load. Two basic parameters were taken into consideration. The first, the form of the notch in order to see its effect on the stress and the failure load. The second, we studied the influence of the locale orientation of fiber around the plate's notch. These parameters are studied in order to see their effects on the distribution stress and failure load of the plate. The calculation of the failure load is determined numerically with the numerical code ABAQUS using the XFEM (extended Finite Element Modeling) based on the fracture mechanics. The result shows clearly that it is important to optimize the effect of fiber orientation around the notch.

Keywords : CFRP (Reinforced Carbon Fiber Polymers), XFEM (extended finite element modeling), fiber orientation.

1 Introduction

Several mechanism of damage can occur in composite structures, such as delamination of the fiber-matrix interface, delamination of the interlayer's in the case of the laminates and or else breakage of the fibers. These mechanisms can occur simultaneously due to the effect of several parameters such as the type of loading and the boundary conditions. The necessary presence of some form of the notch in the structures causes an imbalance of resistance near the notch. Several researchers have been interested in this research axis in order to characterize this phenomenon. In 1898, Kirsh [1] was the first to study the phenomenon of stress concentration and distribution around a hole. Subsequently, Analytical solutions have been gradually found by various researchers for increasingly complex geometries. Hence the necessity of existence of these forms of notch in the conceptions, Neuber [2] and Peterson [3] contributed greatly to the knowledge of this domain by making a systematic analysis

of the main geometries and forms.

Like most high-performance composites, reinforced carbon fiber polymers (CFRP) have favorable material properties of a strength-to-weight ratio and remarkable stiffness, Which makes them more usable in a wide field of industries, Including aerospace, navy, armor, and other infrastructure applications [4,5]. In addition, The CFRP has an impressive tensile strength in the plane, resistance to traction-tension, fatigue, impact resistance, the sustainability [6] and corrosion resistance [4]. However, CFRP composites do not have only optimum qualities, they also have several disadvantages, like poor compressive strength, tensile-compression fatigue and a limited resistance to interlaminar fiber-matrix. They also have a delamination due to the fracture toughness that is limited in the polymer matrices [7].

The aim of all research is always to understand the phenomenon of initiation and propagation of crack, which end the lifetime of aeronautical structures. Significant efforts have been devoted to optimize for strengthening of the weakened structure part to restore structural efficiency and thus ensure the safety of the structures. These composite structures consist of complex material interactions and can be analyzed at differently sized scales. The majority of research has focused on investigating composites in a large scale, where the composite is assumed to be a homogenous material with averaged mechanical properties. Other research has focused on the random nature of individual fibers in the microscopic scale. With the XFEM, a wide range of composite materials can be evaluated. For example, Benvenuti et al.[8] applied XFEM concepts to modeling FRP-reinforced concrete and Sosa and Karapurath [9] used XFEM to model delamination of fiber-metal laminate composites with orthotropic material properties. Moreno et al. [10] modeled and analyzed crack propagation in chopped glass-fiber composites under biaxial loading. Motamedi [11] investigated the non uniform nature of composites using a combination of XFEM and other commercial FEM software. Instead of using typical isotropic material properties, Nagashima and Suemasu [12] developed an orthotropic material model undergoing mode I delamination.

By using the technique of XFEM, our study consists to a direct use of global composite failure property given in table (3). A key advantage of XFEM is that in such problems the finite element mesh does not need to be updated to track the crack path and also it does not require to follow a predefined path. Subsequent research has illustrated the more general use of the method for problems involving singularities, material interfaces, regular meshing of micro structural features such as voids. It's why other researchers use this technique for patch repair [13]. Actually, cracks can grow freely within a bulk region of a material without the requirement of the mesh to match the geometry of the discontinuities neither remeshing near the crack [14] and [15].

The purpose of this work is to conduct a systematic investigation of the orientation effect of the fibers at the side of the notch on the resistance of composites structure with different notch geometries. To obtain the stress distributions and failure load under mechanical with damage behaviour, the finite element analysis was investigated by tensile loading of several plates with notches of various forms and varied dimensions.

2 XFEM Technique

The X-FEM uses the concept of partition of finite element unity and enrichment function. The enrichment functions are expressed as follows [16]:

$$U_{xfem}(X) = \sum_{i \in \Gamma} N_i(X) u_i + \sum_{i \in J} N_i(X) H(X) a_i + \sum_{i \in K} [N_i(X) \sum_{\alpha=1}^4 F_{\alpha}(X) b_{i\alpha}] \quad (1)$$

Where (Γ) is the set of all nodes in the mesh, ($N_i(X)$) is the nodal shape function and (u_i) is the standard (degree of freedom) DOF of node (i) (u_i represents the physical nodal displacement for non-enriched nodes only). The subsets (J) and (K) contain the nodes enriched with Heaviside Function ($H(X)$) or crack-tip function ($Fa(X)$), respectively, and (a_i, b_{ia}) are the corresponding DOFs. The first and second term on the right-hand side is applicable to all nodes in the model; the third term is valid for nodes whose shape function support is cut by the crack interior and the third term is used only for nodes whose shape function support is cut by the crack tip [17].

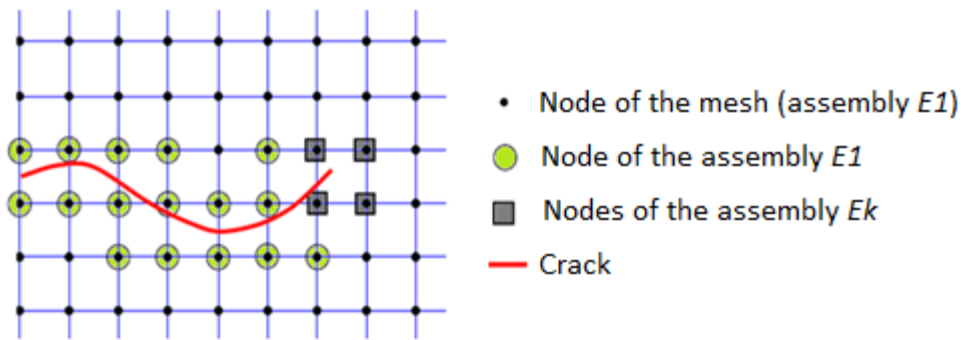


Fig.1 description of the E1EJEK sets of the displacement field approximation enriched finite element

The Heaviside function ($H(X)$) is defined as follow:

$$H(x) = \begin{cases} -1, & \text{if } x > 0 \\ 1, & \text{if } x < 0 \end{cases} \quad (2)$$

The crack-tip function ($Fa(X)$) contains the enrichment functions (branch functions) used to increase the accuracy of the numerical solution around crack tip and their formulation depends on the nature of the problem to be solved. For LEFM problems, these functions are chosen based on the asymptotic behavior of the displacement field at the crack tip [18]:

$$Fa(X) = [\sqrt{r} \sin \frac{\theta}{2}, \sqrt{r} \cos \frac{\theta}{2}, \sqrt{r} \sin \theta \sin \frac{\theta}{2}, \sqrt{r} \sin \theta \cos \frac{\theta}{2}] \quad (3)$$

Where (θ, r) are a polar coordinates system with its origin at the crack tip and when ($\theta = 0$) it is tangent to the crack at the tip, $\sqrt{r} \sin(\theta/2)$ takes into account the discontinuity across the crack face. This function has a lot of applications including biomaterial and elastic-plastic power law hardening material.

3 XFEM input parameter

The plate domain is created as a solid part of the solid section, The X-FEM enrichment domain function is input as follows:

*Enrichment, name=Crack-1, type=PROPAGATION CRACK, activate= ON

The solid composites section is used for the X-FEM domain, whereas the thickness section is created as one single solid composites section. Therefore, this domain section serves the X-

FEM purpose. The evaluated damage is maximal at crack opening and is calculated using the following equation [19]:

$$\delta_n = \sqrt{\langle \delta_n \rangle^2 + \delta_s^2 + \delta_t^2} \quad (4)$$

The following analysis uses the elastic properties of Carbon fiber reinforced polymer that are listed in Table 2. The maximum principal stress is the value of the un-notched nominal strength which is measured as (2560) MPa in first direction and 64 MPa in the second direction. In addition, the damage evaluation criterion is maximum traction energy (maximum crack opening of the composite specimen is experimentally measured as 81.5, 277, 277). Therefore, the input file of the order line in the software becomes as follow:

*Damage Initiation, criterion=MAXS 2560., 2560., 500.

*Damage Evolution, type=ENERGY 81.5, 106.3, 106.3

*Damage Stabilisation 1e-5

4. Analysis

4.1 Geometrical specimens and materials

The present study consists in a three-dimensional numerical analysis of tensile loaded with four geometrical notch model (Fig.2). A linear material and geometrical analysis was performed. (Fig.3) shows a detail of the mesh used at a different edge.

In tensile behavior the restraining and loading condition consists on applying a restraint in the edge and tensile displacement at the opposite edge.

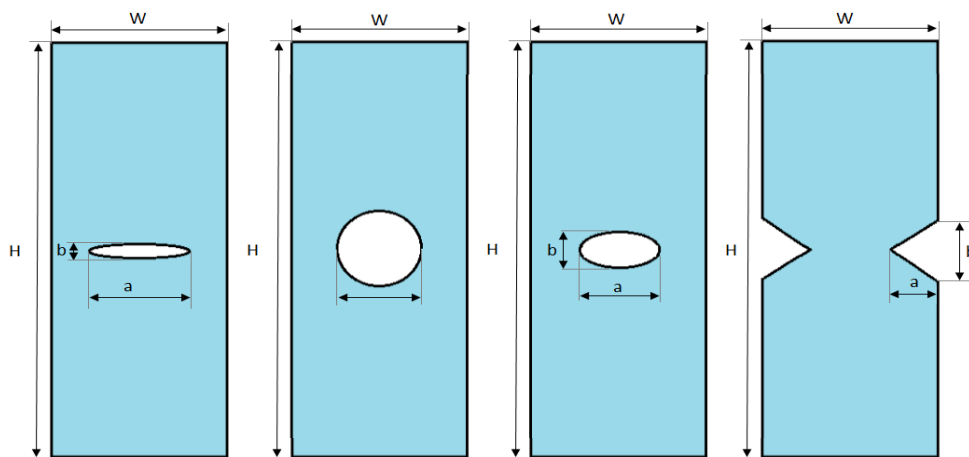


Fig.2. plate with different notch geometry, thickness of 2mm and the applied tensile displacement U of 2mm.

Table 1

B(elliptical)	e(circular)	c(elliptical)	f (V lateral)
H = 140mm	H = 140mm	H = 140mm	H = 140mm
W= 50mm	W = 50mm	W = 50mm	W = 50mm
a = 20mm	D = 20mm	a = 20mm	a = 20mm
b = 1/4 a	b = 20mm	b = 1/2a	b = a

The mesh subjectivity of the proposed model is illustrated by simulating the response of a notched GFRP composite which is loaded in tension. The simulated specimen has 2 mm in

thickness, 140 mm in length and 50 mm in width. It contains in the first, different dimensions of a central notch. In the second, it has three modification of fiber orientation. On the other hand, Table 3 lists the used properties.

Table 2

Longitudinal Young's modulus	$E1$ (GPa)	162
Transverse Young's modulus	$E2$ (GPa)	8.96
Poisson's ratio	ν_{12}	0.316
Shear modulus	G_{12} (GPa)	4.69
Shear modulus	G_{13} (GPa)	4.69
Shear modulus	G_{23} (GPa)	3.973
Longitudinal tensile strength	XT (MPa)	2560
Transverse tensile strength	YT (MPa)	64
Longitudinal fracture energy	GI (kJ/m ²)	81.5
Transverse fracture energy	$GII=GIII$ (J/m ²)	277

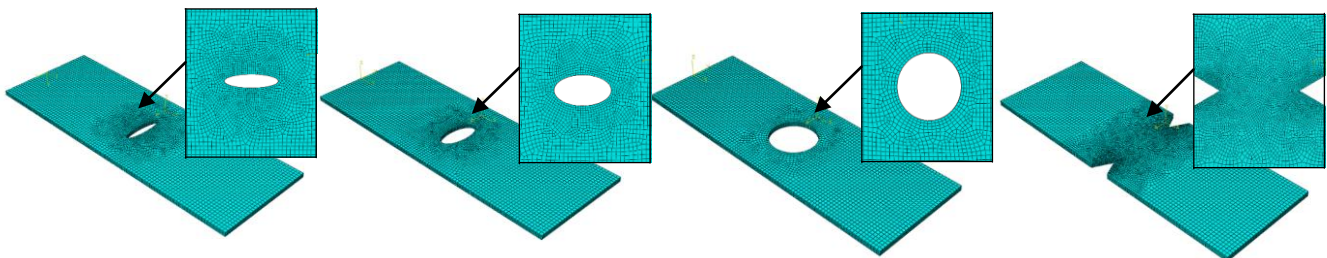


Fig.3. Detail of the mesh of different geometrical notch.

As shown in the following figure, several local marks were surrounded by the different types of notches to guide the orientation of the fibers according to the shape of the notch. The area away from this notch was attached only by a single mark oriented in the direction of loading (unidirectional composite). We use Assigning Material Orientation. This technique can be done either by "Create Geometric Part" or by "Create Mesh Part" in order to sweep the structure by local marks that indicate the orientation of the fibers.

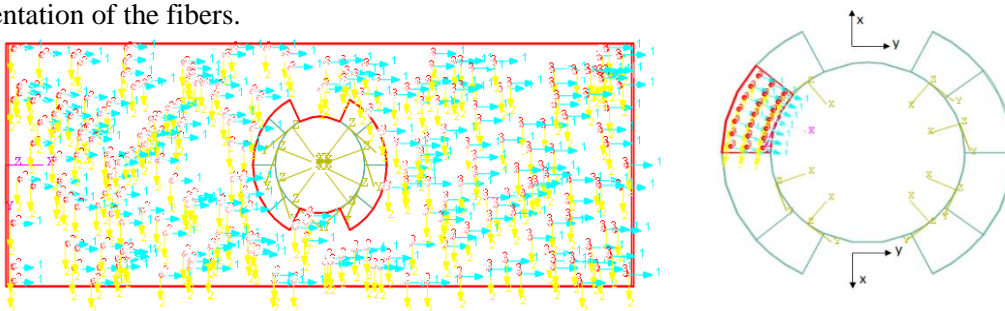


Fig.4. Schematizations of the local marks for the modification 3 of the circular notch shape.

The presence of the notch in the structures weakens its resistance. This leads to a concentration of stresses leading to the formation of a crack. The solution of this problem can be done by a geometric reinforcement.

4.2. Effect of the size of different geometrical notch type on the damage of the plate

The Objective oriented in this section it's to canceled the property effect then to keep the same rapport (W/ H, a/ W). An other objective is to intervener only on the effect of the size of each notch form upon the predicted the failure that occur in the plate configurations. Thus it can be demonstrated the robustness of this type of analysis.

The desired magnitude to be evaluated in these curves is the resistance of the plates to the damage represented by the load-displacement curves. The overall response during the loading of the plates to the damage is ensured by the reaction of the force at the level of the embedment and the displacement at the level of the surface where applies the load. This is to illustrate the overall response of our notched plate.

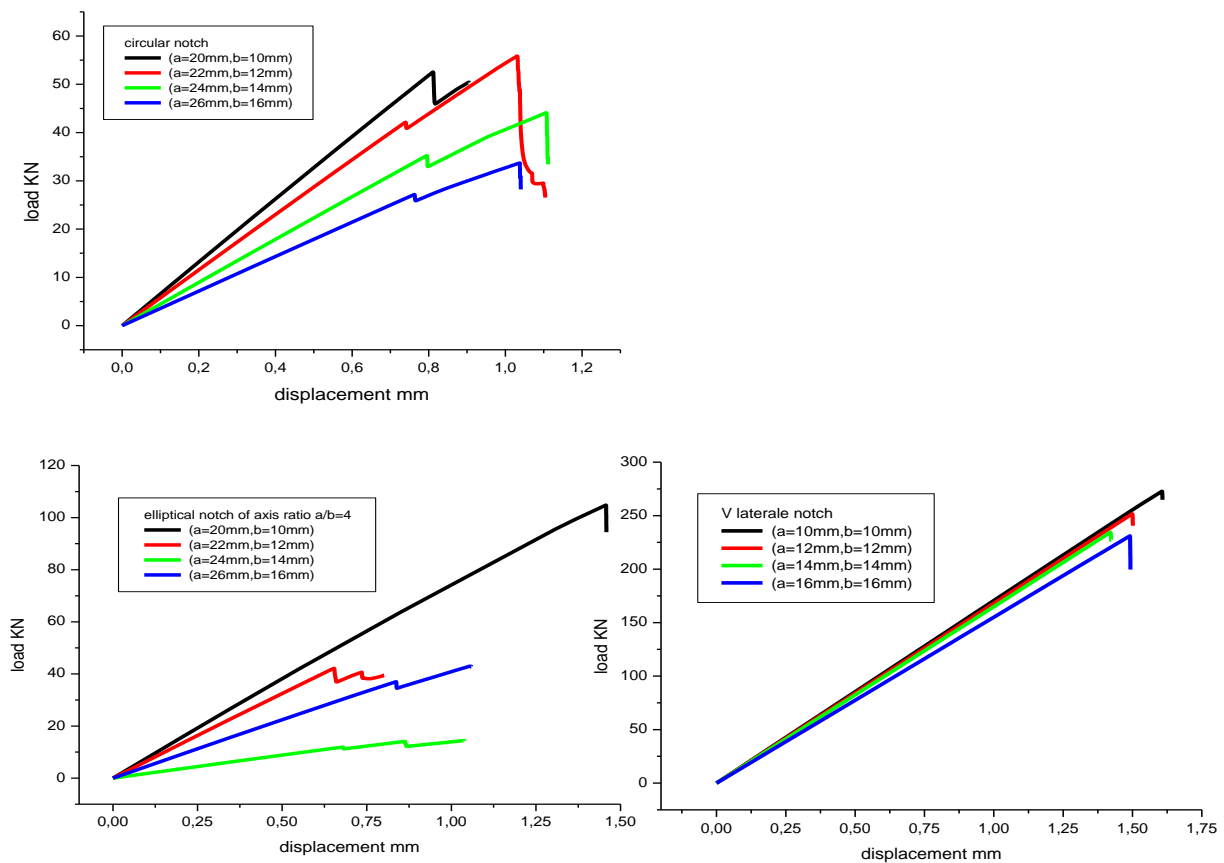


Fig.5. XFEM load displacement curve of a) circular, b) elliptical of $a/b=2$ and c) elliptical of $a/b=4$ and d) lateral V , for different deferent notch size.

In the figure, it is clear that there is a proportionality between the dimensioning of the notch and the damage force in an order of value of 10KN in average between each dimension of the notch. It is also evident that the values are also proportional to the rupture parameter of the damaged composite. These values do not exceed 160KN. Depending on the shape of the notch, it is found that the plates with a small notch are more resistant than those with a large notch. This can be reflected in the fact that the plate with an oversized notch will extend even further, resulting in a decrease in the damage force. So the longer the plate has an ability to lie, the less resistant it is.

The same applies to other forms of notches with different values except for the V-shaped notch which presents itself with high values and the same pitch between these different dimensions. This is due to their positioning which makes them more resistant (edge effect), despite the fact that this sharp shape favors the initiation and rapid propagation of the crack.

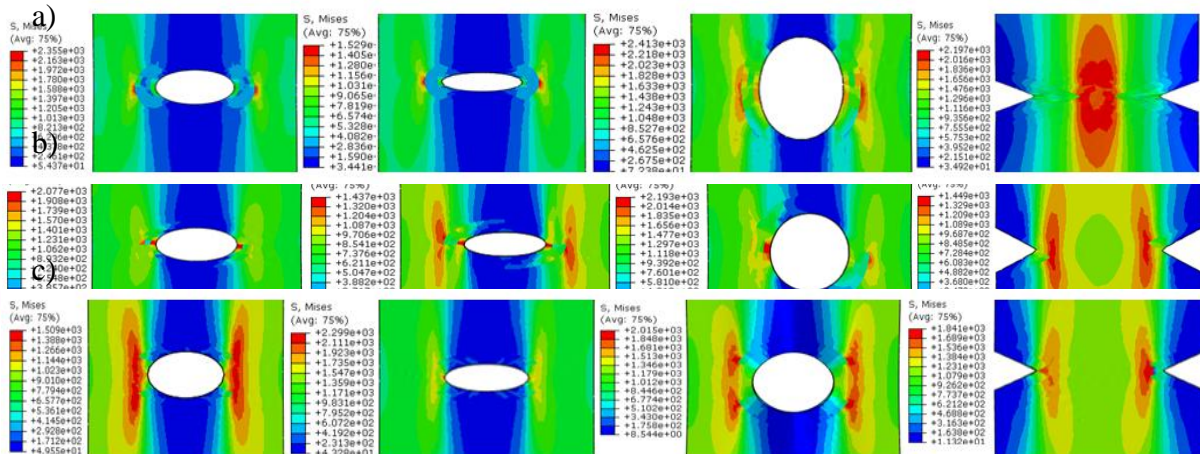


Fig. 6. stress distribution of each form of notch under a) modification1 and b) modification 2 c) modification3

4.3 Effect of the modification of the fiber orientation on damage of plate

Let us start from the idea that these modifications move a part of the concentration zone of the stresses towards the zones of discontinuity of the fibers.

In this section, the effects of the fiber orientation (d/b ratio) on the ultimate failure load of a unidirectional composite plate with an elliptical, circular and lateral v notch are shown in Figure 4. XFEM failure criterion is used to predict the ultimate failure load in this analysis. Figure.3 indicates that the ultimate load decreases when the cutout size increases i.e., d/b ratio increases the reduction in ultimate failure load is 26%, 42% and 54%, respectively.

From the Fig. 3, it is also observed that, reduction rate in ultimate failure load decreases, as the cutout size increases.

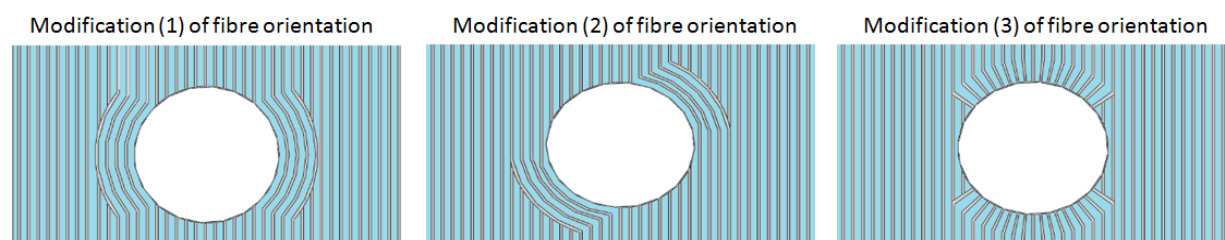


Fig.7. the fiber orientation form of composite around the notch

The effect of fiber orientation of the each plate under tensile strength is investigated by changing its orientation around the notch. The notch size is held constant at the baseline

values, also the property of CFRP. The variation of tensile strength of the plate with different form of notch is shown in Fig. 6.

We limited ourselves only to the presentation of the circular shape of the notch. The other geometric shapes follow these same three types of modification. The only problem posed in these modifications is the discontinuity of the fibers, which are well illustrated in these schematizations and these zones of concentration of the stresses.

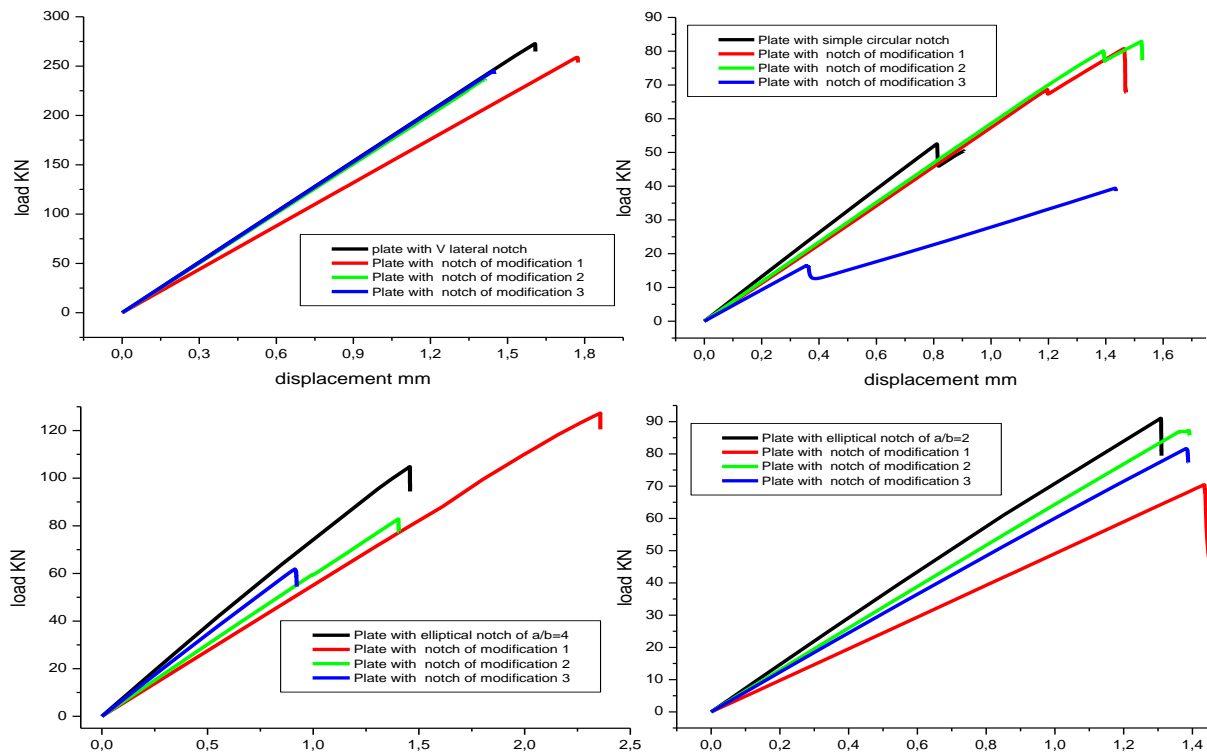
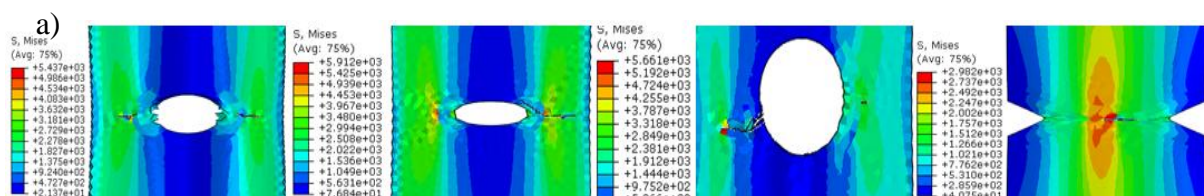


Fig.8. XFEM load displacement curve of a) circular, b) elliptical of a/b=2 and c) elliptical of a/b=4 and d) lateral V, for different modification of fiber orientation.

These modifications are approaches to the resolution of the problems of rapid damage of the notched plates but which are sometimes limited due to the discontinuity that occurs at the level of each modification. At first places the effect of these modifications is conditioned by the shape of the notch. We notice that the curves are close to one another. Since the effect is only on the fiber orientation with the same size of the notch. This is not the case for the other curves. It is also noted that the modifications do not have much effect except for the circular and elliptical shape for a / b = 4 which improves its resistance.

It is also remarkable that the rupture is similar to the level of the discontinuity of the fibers of the composite and the propagation of the crack is oriented towards the least resistant path which is in the cross-section of the plate. As against the antisymmetric orientation (amendement2) the propagation path takes the diagonal whatever the shape of the notch, for two main reasons: firstly the outbreak of the crack follows the fiber discontinuity zones which is already antisymmetric and second.



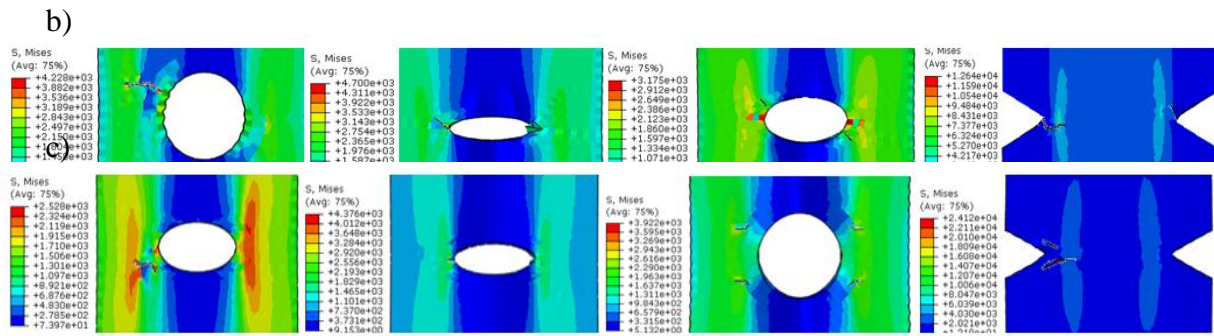


Fig.9. stress distribution of each form of notch under a) modification 1 and b) modification 2 c) modification 3

5 Conclusion

Based on the progressive failure analysis of a unidirectional CFRP rectangular composite plate with a central elliptical, circular and lateral V of notch cutout under uniform uniaxial tensile loading, the following conclusions are drawn:

- XFEM is demonstrated to be a very capable technique to predict the fracture action during the crack propagation to failure of unidirectional CFRP composite.
- The presence of the notch weakens the structure and causes a reduction in the stiffness of the structure.
- For a rectangular unidirectional CFRP composite plate with a central elliptical, circular and lateral V of notch, ultimate failure loads magnitudes are decreased by increasing of the size notch.
- Ultimate failure loads magnitudes can be increased despite the discontinuity of unidirectional fiber and this by the appropriate between type of modification and shape of the notch, case of circular and elliptical notch.
- The position of the notch in the uniaxial tension-loaded structure affects the failure load value, the case of the lateral V-notch.
- The origin of the crack and its propagation depend directly on the orientation of the fibers around the notch.

Références (16 gras)

- [1] Kirsch G. Die theorie der elastizitat und die bedurfnisse der festigkeitslehre. Veit Ver Deut Ing 1898; 42: 797-807.
- [2] Neuber, H., "Theory of Stress Concentration for Shear Strained Prismatic Bodies with Nonlinear Stress-Strain Law," J. Appl. Mech., Vol. 28, Ser. E, No. 4., 1961, pp. 544-550.
- [3] Pilkey, W. D., Peterson's Stress Concentration Factors, Wiley, New York, 1997. 6.2.
- [4] , J L Y Tan, V S Deshpande and N A Fleck, Prediction of failure in notched CFRP laminates under multi-axial loading, Cambridge University Engineering Dept., Trumpington St., Cambridge, CB2 1PZ, UK
- [8] E. Benvenuti, O. Vitarelli, A. Tralli, "Delamination of FRP-Reinforced Concrete by Means of an eXtended Finite Element Formulation," Composites Part B: Engineering, vol. 43, no. 8, pp. 3258-3269, 2012.
- [9] Curiel Sosa, J.L., Karapurath, N., Delamination modelling of GLARE using the Extended Finite Element Method, Composites Science and Technology (2012),

- [10] M. C. S. Moreno, J. L. Curiel-Sosa, J. Navarro-Zafra, J. L. Martinez Vicente, J. J. López Cela, "Crack Propagation in a Chopped Glass-Reinforced Composite under Biaxial Testing by Means of XFEM," *Composite Structures*, vol. 119, pp. 264-271, 2015.
- [11] D. Motamedi, "Nonlinear XFEM Modeling of Delamination in Fiber Reinforced Composites Considering Uncertain Fracture Properties and Effect of Fiber Bridging," PhD Dissertation, University of British Columbia, 2013.
- [12] T. Nagashima, H. Suemasu, "Stress Analyses of Composite Laminate with Delamination Using XFEM," *International Journal of Computational Methods*, vol. 3, no. 4, pp. 521, 2006
- [16] Moës N., Dolbow J., Belytschko T.: A finite element method for crack growth without remeshing, *International Journal for Numerical Methods in Engineering*, Vol. 46, No. 1, 1999, pp. 132-150.
- [17] Qian, Zhen-dong, Jing Hu.: Fracture properties of epoxy asphalt mixture based on extended finite element method, *Journal of Central South University* 19.11 (2012): 3335.
- [18] Belytschko T., Black T.: Elastic crack growth in finite elements with minimal remeshing, *Int. J. Numer Meth Engng*, 45(5):601; 20, 1999.
- [19] ABAQUS, Abaqus Version. "6.9 Documentation." Providence, RI: DassaultSystemesSimulia Corporation (2009).